

**Granite Lake Watershed Association
2102 County Rd 5 NW
Annandale, MN 55302**

<http://www.minnesotawaters.org/granitelakewatershed>

Officers:

Andy Wilde-Pres. 651-895-6342 andy.wilde@comcast.net
Bob Peterson-Vice President. Lorrie Pesheck-Secretary
Tim Waldschmidt-Past Pres. Lucinda Ogden-Treasurer

Shoreline Representatives: Laura Jones, Stan Meyer, Vivian Henry, Deanna Hedman, and Ann Waldschmidt

Webmaster: Gretchen Quiggle

Lake Plan Coordinator: Pete Pesheck

April 2016 Newsletter

Hi Neighbors!

The ice is out and spring is here! I hope this newsletter brings warm thoughts of summer your way. It won't be long now until the boats are back in the water and the fish are biting! Another important milestone is our annual Lake Association meeting. This is scheduled for Apr 30th this year. There will be a lot to talk about milfoil again this year. We continue to stay aggressive in our efforts to control aquatic invasive species and expect to have a guest speaker to talk about zebra mussels. We have not found any signs of them in Granite Lake, but we want to learn everything we can in order to keep them out or find them early when they can be treated. It is sure to be very informative. Hope to see you there!

Dates to Remember:

Saturday, April 30	Annual Granite Lake Watershed Association Meeting	10 a.m. Albion Township Hall
Saturday, May 7	Albion Cleanup Day	Albion Township
Saturday, June 25	Granite Lake Boat Party	6 p.m. in calm waters
July 4	4th of July Boat Parade	Granite Lake

Eurasian Water Milfoil

We made great progress treating the milfoil in 2015. THANK YOU to all who contributed! As I reported in our last newsletter, the results of last year's treatment were very good. However, we are still planning to treat the lake again this summer. A survey will be conducted in May and the treatment areas defined based on the results. The cost of treatment this year is expected to be \$10,000 - \$15,000. We are hopeful that we will again receive a grant from Wright County Soil & Water to possibly cover \$5,000 of our cost. However, that still leaves a big sum for us so once again we ask for your donations to our Aquatic Invasive Species fund.

Zebra Mussel Monitoring

As you know, zebra mussels have been found nearby in Lake John and Clearwater Lake. On Granite Lake, many of you have seen the Zebra Mussel monitoring kits that were installed on some of your docks last year. Many thanks to Pete, Tim, and our other volunteers who created those kits, installed them, and monitored them every 2-3 weeks all summer. **No zebra mussels were found on any of the monitor kits on Granite Lake.** As you know, early detection of zebra mussels is extremely important if we are to have a chance to address an issue in our lake. Therefore, it is critical that we stay vigilant on this and we plan to monitor again this summer. Please let us know if we can again mount the monitor kits on your dock. The kits are nothing more than a small PVC tube. You won't even know it's there!

Please consider the following steps to prevent the spread of zebra mussels and other invasive species to Granite Lake.

- Watch for zebra mussels (see pictures on the last page) when you take out your docks, lifts, and boats. If you find something, notify Pete or Tim, documenting the exact location and preserve the sample (Ziploc bag or cover it in cling wrap taped in place) so the DNR can study it. If you don't find anything, please also report that information to Pete (pete.pesheck@gmail.com) so we can document the absence of zebra mussels at your location at season's end. This information will be very important if we ever find zebra mussels; if the infestation can be shown to be new and localized, we may be a candidate for funds to mount an eradication effort.

- If you buy a used dock, lift, or boat please check it for zebra mussels and Eurasian Water Milfoil before putting it in Granite Lake. The DNR also recommends:
 - Spray equipment with high-pressure water;
 - Rinse with hot water (120 degrees for two minutes, or 140 degrees for 10 seconds); or
 - Dry equipment for at least five days (note that “best current science” suggests 21-29 days dry).

Email Addresses

Do you have a new email address? Or are you aware of a neighbor with a new email address? We are still mailing copies of this newsletter to some members that do not have an email address on file with us; however, this is expensive and time-consuming. Please send us your current email addresses. Thank you!

Please Donate to Fight the Milfoil!

We are continuing to collect donations specifically to treat the Eurasian Milfoil problem. As stated above, we are likely to incur a cost of \$10,000 in 2016, with 2017 treatments still unknown. It is very possible that our total cost will be approximately \$25-\$30,000 over a 3 year period. Please consider sending in a donation now. It will go a long way towards fighting this problem. Thank you to the donors listed below from last year and the early donations already for this year. We are off to a good start!

List of 2015 Aquatic Invasive Species Donations:

Andersohn	\$ 10	Gunderson	\$ 100	McPherson	\$ 100	Robinson	\$ 100
Anderson	\$ 20	Hackenmueller	\$ 100	Mehr	\$ 200	Stevens	\$ 50
Bainy	\$ 400	Haggberg	\$ 80	Meyer	\$ 40	Sundberg	\$ 25
Bellows	\$ 50	Hagstrom	\$ 20	Noble	\$ 25	Tracy	\$ 40
Bratsch	\$ 60	Holmgren	\$ 300	Oppegaard	\$ 50	Van Kempen	\$ 100
Evenson	\$ 200	Johnson	\$ 100	Pesheck	\$ 300	Waldschmidt	\$ 300
Fitzhenry	\$ 110	Jones	\$ 300	Peterson	\$ 110	Wengatz	\$ 600
Fleming	\$ 40	Knutson	\$ 400	Quiggle	\$ 100	Wilde	\$ 100
Foss	\$ 100	Koltes	\$ 400	Rasmussen	\$ 50	Anomyous	\$ 2,000
Gohl	\$ 100	Mackie	\$ 250	Reeves	\$ 100	Scwebel, Goetz & Sieben	\$ 500

List of 2016 Aquatic Invasive Species Fund Donations:

Bainy	\$ 300
Gohl	\$ 100
Koltes	\$ 500

Annual Dues: \$40.00

It is time to send in 2016 annual dues. Of course, you can send in your annual dues at the same time you make a donation the AIS fund. Just specify on your check if your donation is for AIS, annual dues or both. And remember, it's never too late to pay for previous years. Not sure, please contact Lucinda at 320-963-5594

List of 2015 Dues Paid:

Andersohn	\$ 40	Hackenmueller	\$ 40	Mattson	\$ 50	Robinson	\$ 50
Anderson	\$ 40	Hacksel	\$ 40	McPherson	\$ 120	Schwebel	\$ 2,538
Bainy	\$ 100	Haggberg	\$ 40	Mehr	\$ 50	Stevens	\$ 50
Bellows	\$ 50	Hagstrom	\$ 80	Meyer	\$ 40	Sundberg	\$ 50
Bratsch	\$ 40	Hayes	\$ 40	Nanoff	\$ 40	Sunde	\$ 40
Brugh	\$ 40	Hedman	\$ 40	Noble	\$ 40	Swedberg	\$ 40
Coon	\$ 100	Henry	\$ 40	Ogden	\$ 50	Thompson-Henderson	\$ 40
Evenson	\$ 50	Holmgren	\$ 50	Oppegaard	\$ 50	Thul	\$ 40
Fitzhenry	\$ 40	Johnson	\$ 50	Parady	\$ 50	Tracy	\$ 40
Fleming	\$ 40	Jones	\$ 50	Pesheck	\$ 100	Van Kempen	\$ 40
Foss	\$ 40	Kaufhold	\$ 120	Peterson	\$ 40	Waldschmidt	\$ 50
Gerlach	\$ 40	Knutson	\$ 50	Poe	\$ 100	Welter	\$ 100
Gohl	\$ 40	Koltes	\$ 100	Quiggle	\$ 50	Wengatz	\$ 150
Gunderson	\$ 50	Looft	\$ 40	Rasmussen	\$ 40	Wilde	\$ 50
Gunderson	\$ 40	Mackie	\$ 50	Reeves	\$ 40		

List of 2016 Dues Paid:

Bainy	\$100
Gohl	\$40
Koltes	\$100
Mehr	\$100
Nolan	\$200

Please send donations and dues to:

Lucinda Ogden/Treasurer
1885 Knowles Ave NW
Annandale, MN 55302

Friends of the Association \$50 Annual Donation.

The law firm of Schwebel, Goetz & Sieben

51st Floor IDS Center
Minneapolis, MN 55402

1-800-752-4265

www.schwebel.com

BOB PETERSON REMAX INTEGRITY

2391 Kimball Ave NW

Annandale, MN 55302

320-963-6581 or 612-965-0351

CONCEPTS IN COLOR, LLC www.CONCEPTSINCOLORLLC.com

Ryan Brumm

2195 Kimball Ave NW

Annandale, MN 55302

612-518-7977

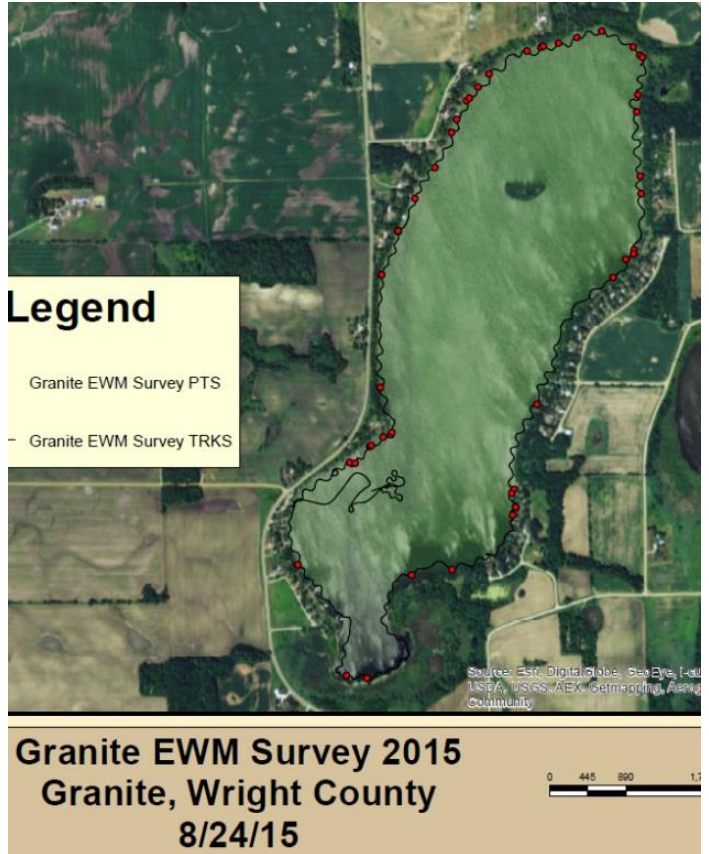
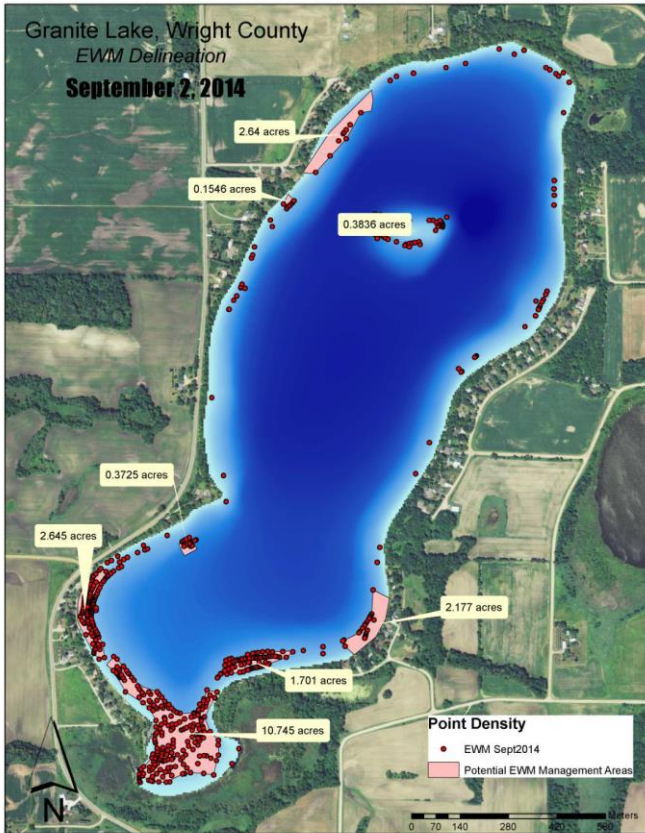


DAVE HOLMGREN LITCHFIELD CHRYSLER CENTER

640 E Hwy 12, Litchfield MN 55355

1-320-693-7951 1-800-642-1837

www.litchfieldchrysler.com



Zebra Mussels

Various stages of Zebra Mussels
 “Razor sharp” on the rock and
very firmly attached



Same rock as above with perspective
of pinky finger in picture

