

Zebra Mussels



Kathy Jonsrud
Wright County COLA



Granite Lake Watershed Association Annual Meeting

**April 30th, 2016
WELCOME!**

Aquatic Invasive Species

What can I do?

Eurasian Water Milfoil

- Delineation and control strategy

Zebra Mussels

- Zebra Monitoring Program
- Microscopic Examination Pilot
- Very latest on Zebra lifecycle

Starry Stonewort

- Our latest foe

Good Weed 😊 or Bad Weed? 😞

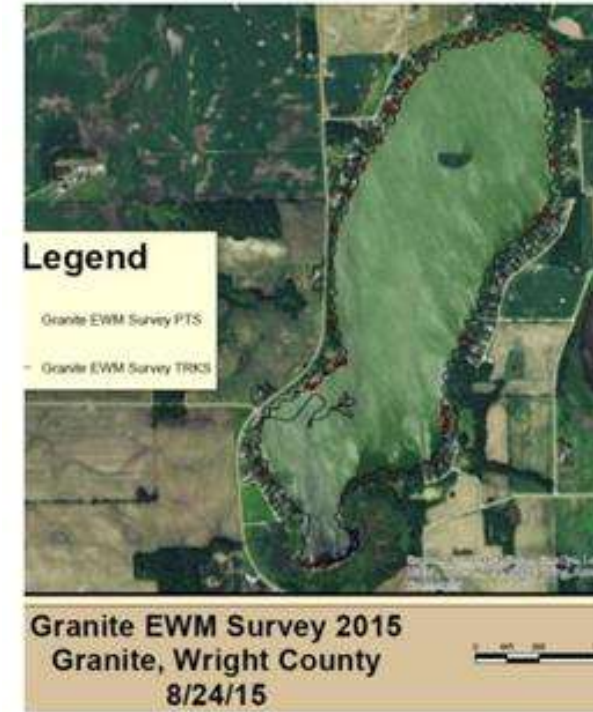
- Good Weed!
- Star Duckweed
- Lots on Granite last fall



Eurasian Water Milfoil (EWM)



- Success on Granite to control
- Yearly delineations are critical
- Vegetation Point Intercept every 3 years
- Wright County AIS Treatment Assistance Grants for 2016
- Cruise the lake avoiding EWM



Anyone know what the specs are?

- Baby Zebra Mussels
- And not so cute



BEWARE...

**Zebra Mussels are very close
to Granite!**

**There are mature infestations in two Wright
County Lakes—Clearwater and Lake John.**

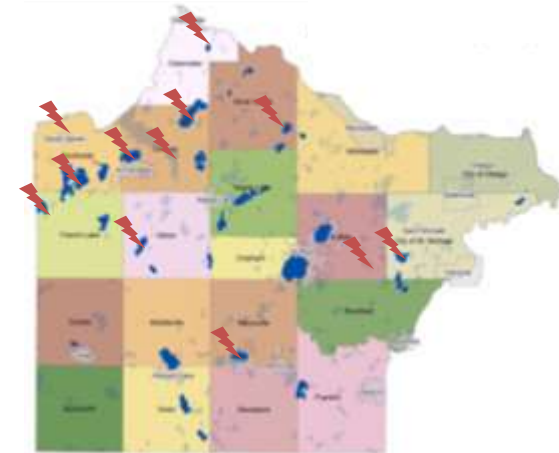
**If you have been
there....decontaminate!**



Zebra Monitoring Programs

- Standard Zebra Mussel Monitoring
 - 3rd year
 - 2015 : 26 lakes | 180 units | 900 inspections
 - Important Yearly Reporting
 - 2016 DNR special use permit

- Pilot Microscopic Inspection of Plate Monitors
 - Granite in Pilot



Zebra Mussel Life Stages

- Look and feel for a “D” shape
- Very sharp
- Long tentacles



Various stages
of Zebra
Mussels

“Razor sharp”
on the rock
and very firmly
attached



- What % of lakes in MN have Zebra?
- 0.6% by number of lakes
- 10% by lake acreage

Lake Girl and Guy vs. Zebra

- Education and awareness
- Emerging treatment strategies for an early infestation
- Guests visiting with watercraft?
 - Watercraft | 5 days dry
 - Equipment | 21 days dry
- Purchasing used watercraft or lake equipment?
Insist on a decontamination
- Latest studies on Minnetonka infestation

Starry Stonewort

- Extremely Invasive
 - First MN infestation Lake Koronis (Stearns County)
 - Large algae from chara family
 - Can spread by fragments
 - **DENSE** mats of vegetation that surface
 - Reduce plant diversity
 - Impede wild life movement/spawning
 - Reduce recreation
- Treatment of Starry Stonewort
 - Limited scientific information
 - Combination of chemical and harvesting
- Increased exit access monitoring at Koronis



Plan to monitor your lake for Starry Stonewort

Aquatic Invasive Species

What can I do?

Eurasian Water Milfoil

- Keep up with management strategy
- Cruise the lake in deeper water

Zebra Mussels

- Educate and Monitor
- Buying used equipment? Insist on hot water high pressure decontamination
- Visitor's equipment clean and dry

Starry Stonewort

- Communicate the Koronis infestation
- Educate and watch

