

JESSIE LAKE WATERSHED ASSOCIATION



JESSIE JABBER

VOL.18, NO.2

FALL 2015

MESSAGE FROM PRESIDENT DAVID ANDERSON:

Welcome to the Jessie Jabber. After one of the most beautiful summers I can remember, we are having one of the warmest and colorful autumns too. We are truly blessed to have the good fortune to see spectacular sunrises and sunsets at our cabins and homes on one of the five watershed association lakes, Jessie, Little Jessie, Peterson, Spring and Little Spring. It doesn't get much better than this.

I am honored to continue on to my second year as President of JLWA. I want to say thank you to all the people who work as board members or coordinate some of our important activities. We have a great association and I am thankful for the many members that have participated in the past and continue to serve. At our fall meeting, we were fortunate to keep continuity on our board as Mike Nystrom, the only board member to step down, and Dick Schedin, another Little Jessie long time home owner, volunteered to take his place as director. Thanks also to members who assist through financial means. It takes all of us to make our association a success.

The biggest challenge that all our lakes face is Aquatic Invasive Species (AIS) with some details of where we are with AIS and what is being done to combat it is in this Jabber. We had a report of purple loosestrife in Little Jessie so we all need to be vigilant to ensure we obey the laws when transporting our boats. Last spring you received the DNR brochure, Help Protect Minnesota Waters, please refer to it to see what you can do to help stop AIS.

I want to highlight some of the major events and projects from last year and scheduled for 2016.

- Our summer picnic held at Rhonda Nichol's will continue next year on a Friday, July 22nd.
- Share the Lake day was a huge success with 34 guests from Bigfork Nursing Home participating in the pontoon rides, food and music. Our guests really appreciated it. The date for next summer has not been set yet. Thanks to Marn and Deke for coordinating the event.
- Little Jessie had its annual boat parade and lunch on July 4th. It was a good time. Hollister and Jerril Madsen have volunteered to coordinate a boat parade for Jessie Lake as well this coming July 4th. We will publish details for both in the spring Jessie Jabber.
- The annual fall roadside clean-up on Hwy 35 on October 9th was a great success with plenty of volunteers this year. Thanks to Krista Hagen. Next year's date has not been set.
- The beavers continued to be active this summer and fall with their dams clogging flow in our creeks and impacting our fish spawning areas. To reduce their impact, the Board has agreed to continue this bounty continue into 2016.
- One additional project that we are looking into setting up is a proactive improvement group with volunteers to help monitor of creeks, remove dams and help in with unexpected problems as needed. More on that in the spring.
- Our Spring JLWA Member meeting will be June 11th.

Lastly, starting with the Spring 2016 Jessie Jabber, we will no longer be sending out the Jabber to non-members. We have done this to keep our costs down and encourage non-members to become members. We want everyone to be active in our Association.

As the beautiful fall season welcomes in the holiday season, we wish each of you a very Merry Christmas and a safe and happy New Year in 2016.

JLWA ANNUAL MEETING-SEPTEMBER 5, 2015

By Rhonda Nichols

President David Anderson called the meeting to order at 10:00 am following the coffee hour and introduced the Board and new members. There were 21 members present.

OLD BUSINESS and 2015 PROJECT REVIEW

Business Items -- The minutes of the spring meeting were posted on the website and approved by the members with no corrections. Tina Jorgenson gave the treasurer's report showing that the JLWA treasury contained \$7,187.42 as of the end of August, which includes \$905 donated by forty-seven members. President Anderson presented the 2015 Budget (see attachment) and a motion was made and passed to accept the treasurer's report and the budget. Tina also reported that the membership was currently at 116 members.

Spring Meeting --After discussion we agreed to continue the date for the spring meeting on the second Saturday after Memorial Day, June 11, 2016, for another year.

Picnic --The JLWA picnic was held on a Friday this year and only 21 members attended the picnic at Rhonda Nichols. After discussion on improving attendance, it was agreed that the 2016 picnic be held the same week as this year, again on a Friday, which is July 22, 2016 at Rhonda Nichols. The picnic will start at 6pm rather than 5pm to attract more weekend members.

Lake Levels -- Jim Anderson reported that the lake level today was the same as May 11th and down two and one-half inches from last year(see following article and chart).

Loon Survey -- Jim Anderson reported that there were 6 resident loons on Jessie this year. A nesting pair on the north end of the lake hatched 2 chicks and a pair on the south end had 1 chick.

Website --The Association website is updated regularly by Hollister Madsen. You can visit the website at the URL www.minnesotawaters.org/jessielakewatershed.

Share the Lake Day -- Jim Deconcini reported on the Share the Lake Day this year. It was a big success with 34 from the Bigfork nursing home on a beautiful day. There were 8 students from the Deer River high school Honor Society and 12 JLWA members helping. Rob Larson provided the music.

Shoreline Restoration Projects -- Grant funds (\$1000) are still available for shoreline projects so if you have shoreline issues please notify Harold Goetzman or Andy Arens at SWCD. Harold reminded everyone that if any alteration of the shoreline is contemplated, a permit is required.

July 4th Parade - Mike Nystrom reported on the 4th of July boat parade on Little Jessie. They have been doing it since 1976 and have 22-30 boats participate. They has coffee and cake following the parade. Hollister and Jerril Madsen have offered to coordinate a parade on Big Jessie for next year.

Water Quality -- Harold Goetzman reported that the water clarity is pretty much the same as it was last year at 11.1 ft. average for the Secchi reading. Little Jessie clarity is very good with less phosphorus present. Harold reported the midge fly (blood worm) hatch recently was worse than normal this year. They don't affect water quality and the fish feed on them as deep water invertebrate in the winter as well as the hatching midge (See attached article).

Roadside Cleanup -- Krista Hagen is coordinating the fall roadside cleanup, which will be on Friday October 9th, with lunch afterward at Rita and Jim Anderson's. Volunteers are still needed and we will meet at Jessie View Resort on CR 35 at 10:00 am.

NEW BUSINESS

Invasive Species -- Mike Nystrom reported that he found purple loosestrife, an invasive species, on Little Jessie. SWCD visited the lake and did not find anymore while inspecting the entire shoreline.. We all should be aware and if it is found report it to Harold Goetzman. Harold also reported that Jessie Lake was inspected this year as well without finding any purple loosestrife or other invasive species. There is state funding to fight invasive species, concentrating on the highest priority lakes. We did have a one day inspection on Jessie by the County boat inspection crew, but there were no boats put in at the landing during those 6 hours. The DNR is also doing inspections on a number of lakes including

Sand and Bowstring If you notice any boating problems, call the tip line. The Board will discuss other monitoring ideas this fall. Mike Nystom attended the Healthy Watershed Conference in Grand Rapids and reported on some of the break out sessions he attended.

Beaver – Jerry Kaczor will be paid to trap beaver again this year as there is still activity reported.

Other – President Anderson reported that currently the DNR is studying the effect of northern population in lakes on the walleye population. They plan on proposing a new regulation for northerns.

ELECTION OF OFFICERS

The following nominations for Officers and Directors were presented by President Anderson:

President – David Anderson

Vice President – Hollister Madsen

Secretary – Rhonda Nichols

Director 2-year term – Dick Schedin

Jason Jorgenson

Director 2nd year of 2-year term – Jake Carstensen

Don Ojanen

Past President (1-year term) – Harold Goetzman

Diane Goetzman moved to accept the nominations and the motion seconded by Ron Beranek passed unanimously.

DOOR PRIZE – Ten cedar wood duck houses made by Jim Anderson were given as door prizes to new members first and then a drawing.

A motion was made to adjourn and the members enjoyed a potluck lunch.

JLWA 2016 Proposed Budget-Approved at Annual Meeting

<u>Expenses</u>	<u>2016</u>	<u>2015</u>	<u>2014</u>
Postage	\$450	\$450	\$450
Printing	\$350	\$350	\$350
Share the Lake	\$420	\$350	\$350
MN Waters [dues & hosting web]	\$270	\$250	\$250
MN Lakes and Rivers Dues	\$150	\$150	\$150
Meeting rentals	\$100	\$100	\$100
Mileage/Education	\$0	\$0	\$200
ICOA [dues]	\$50	\$50	\$50
IWELP [dues]	\$100	\$100	\$0
Lab water testing	\$300	\$300	\$300
Supplies [office/operating]	\$100	\$100	\$100
AIS Signs for Public Access	\$0	\$0	\$200
JLWA Picnic	\$75	\$75	\$75
Beaver Bounty	\$350	\$350	\$0
<u>Total</u>	<u>\$2715</u>	<u>\$2625</u>	<u>\$2575</u>

MEET YOUR NEW DIRECTOR

RICHARD (DICK) SCHEDIN

Our family moved here in 1945 from Rochester, MN and started the Bowstring store, which is where I was raised. The original store was a separate small building closer to the highway and in the 1950's the store was built on to the house. Subsequent owners have expanded it. I graduated from Deer River H.S., Rochester Junior College and the University of Minnesota College of Biological Sciences followed by working in research for several years. There I met my wife Chris and we have been married 45 years with three grown children. We started our own Durable Medical Equipment company in our home in Minneapolis and in 1981 built our home on Little Jessie Lake. We then

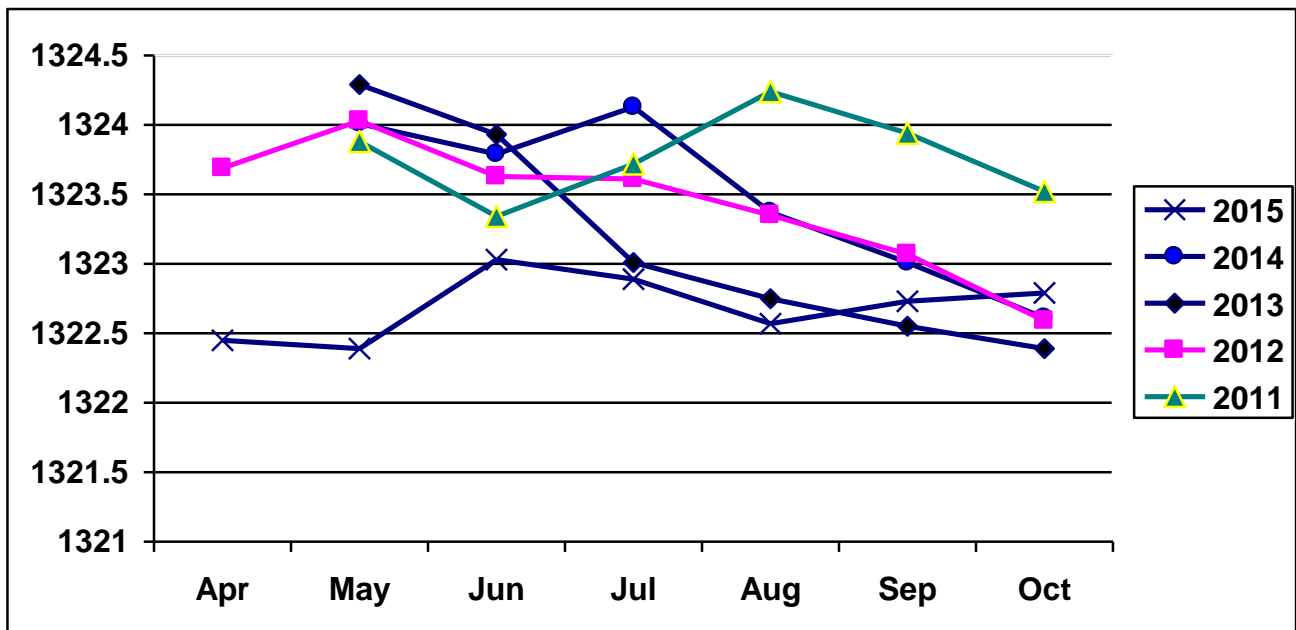
moved the company to locations in Grand Rapids and St. Cloud. Recently, we sold our company and are both retired (Chris still consults) and enjoy having our 9-year old Grandson living with us. Hobbies are the usual for this area mostly centering on the outdoors. I was a volunteer with "Lets go fishing with seniors", Itasca Hospice, serve on our church governing session and I am a supervisor on the Bowstring Township Board. Until recently, I played 5-string bluegrass banjo and was part of a "clogging" performing team. I also taught clogging through community ed.

I am very pleased to serve on the JLWA Board.

JESSIE LAKE WATER LEVELS

By Jim Anderson

This year the ice out on April 15th was early and the water level on May 16th was 1322.75 feet above mean sea level or about 15 inches below the level in the previous spring. This was due to the very low snow levels we had last winter. If you remember the last half of May was a rather wet with over 6 inches of rain and thus, the lake rose almost 8 inches by mid-June when it started going down until early September. The water level declined steadily over the summer to reach a level of 1322.49 ft. on Aug. 29th, which is where we started on May 11th. During the summer we did have a few 0.5 to 1 inch rains so we only lost 6 inches. By Oct. 10th when the gauge was removed we had gained back about 4 inches. This was about 21 inches less than the long-term average of 1324.26 feet. Although the fall final level (1322.79 ft.) is rather low, it is still slightly above the fall levels for 2012, 2013 and 2014. Hopefully, we will have a large amount of snow this winter to bring the lake back to normal. As you can see by the graph there are only a few times in the last 5 years we have been near normal.



JESSIE LAKE FIVE YEAR SUMMER WATER LEVELS (Feet Above Sea Level)

DNR FISHERIES UPDATE ON NORTHERN PIKE MANAGEMENT

By Dave Weitzel, DNR Area Fisheries

Northern Pike are among the most wide-spread gamefish in Minnesota and are a popular species for anglers across the state. Unfortunately, small fish are often landed – what anglers often call hammer-handles – and these fish may be causing problems in much of Minnesota, especially in the north-central part of the state where numbers of small pike appear to be increasing. High numbers of fish

less than 22 inches long are thought to reduce perch numbers to unhealthy levels, tip the balance toward smaller panfish and may reduce the effectiveness of Walleye stocking.

Like many lakes in north-central Minnesota, the Northern Pike population on Jessie Lake appears to be increasing. Catches from 1983-2009 suggest the lake supported a smaller pike population compared to lakes with similar habitats. The most recent assessment was conducted in 2013 and this assessment captured nearly 17 Northern Pike per gill net. This catch was high compared to lakes with similar habitats and was nearly double the previous high for Jessie Lake. While the cause or effect of this increase is unknown, a high density of Northern Pike in Jessie Lake is generally considered undesirable. When Northern Pike occur at high density, size and age structures are typically poor. Research has shown that angler harvest is often a driving force in Northern Pike population dynamics. As large fish are removed from the system, they are often replaced by an increasing number of smaller, slower growing fish.

Because pike populations vary across the State, there is no single regulation option that would likely work universally. Instead, DNR fisheries is exploring the idea of implementing a zone concept for Northern Pike. Such an approach could protect large pike in the northeast, increase pike populations in the south and eventually help solve the problem of an over-abundance of small pike in north-central Minnesota lakes, such as Jessie Lake.

The current proposal for the north-central zone is to protect pike from 22 to 26 inches, and allow the harvest of up to 10 Northern Pike, of which only two can exceed 26 inches. This regulation is expected to increase the number of desirable-size pike for anglers, while allowing expanded harvest opportunities for overly abundant small pike. The protection of medium-sized pike is needed to improve size quality, which will be accomplished with the 22 to 26 inch protected slot. Allowing high harvest of small pike is unlikely to regulate fish size by itself, but will provide additional harvest opportunities for an abundant and renewable resource. Although most anglers are unlikely to utilize the expanded bag limit, there is no good biological reason to protect small pike. In reality, most pike populations are producing very high numbers of small pike, and many of those small pike live a short life and die naturally. Because pike reproduction is typically very good, there is little benefit to protecting small pike that are unlikely to grow to a desirable size.

The DNR is currently accepting comments on the Northern Pike proposals. To leave comments or learn more about Northern Pike management, please contact the Grand Rapids Area Fisheries Office at 218-327-4430 or visit the DNR Website <http://www.dnr.state.mn.us/pike/index.html>.

DNR REPEALS AIS TRAINING AND TRAILER DECAL PROGRAM

DNR News Release, June 22, 2015

The main way that AIS moves from one lake to the next is by hitching a ride on a boat, trailer or other water related equipment. As part of a good education and outreach program, in 2012 the legislature passed a law requiring watercraft trailers to have a decal showing that the owner has taken an AIS training course. Now the DNR's program for AIS training and trailer decals was repealed by the Minnesota Legislature. The DNR recognizes there are some concerns with the way the law was written. For example, people transporting boats on trailers through Minnesota to another destination were required to take the course. The repealed law applied to anyone trailering a boat or water-related equipment, such as docks and lifts, in Minnesota. In its place, the Legislature has added an AIS affirmation provision to some licenses. The affirmation will be added to new watercraft and nonresident fishing licenses beginning in 2016 when all newly issued watercraft licenses will have an AIS affirmation section. All nonresident fishing licenses will also include the AIS affirmation section beginning in March 2016. License applicants after these dates will receive a summary of AIS laws and will be required to affirm that they have read and understand the summary in order to receive their license. No fees are associated with the affirmation.

COUNTY AIS PLAN ACCOMPLISHMENTS FOR 2015

Information presented to ICOLA by Bill Grantges, Itasca County AIS Coordinator

This spring Itasca County adopted an AIS plan that would direct the spending of funds received from the state legislature to combat the spread of AIS with these six priority areas as reported in the spring Jabber. The amount of money allocated to each area was outlined in that article and the organization responsible for directing the program. The total amount of state funds for July, 2015 to July, 2016 was \$569,636 for Itasca County and the spring legislative action assures continued funding for the future.

Prevention

In the area of prevention, there were 6,357 hours of boat inspection and decontamination logged by the twelve County staff inspectors. The trends still point to a rate of over 20% violation. The inspections continued on weekends through October due to the nice fishing weather. There were zebra mussels found on a boat attempting to launch on Pokegama Lake in June and he was denied access to all MN waters by the DNR Conservation Officer who was called by the inspector. Also, there were zebra mussels found on two bunk trailers at a Pokegama Lake landing during a fishing contest. Hopefully, no zebra mussels were on the boats that were launched. The Mobile Thermal Decontamination Unit was put into service June 24th and has been well received by the public. It was stationed on many weekends at the Sand Lake landing.

Early Detection

Julie Miedtke and Mary Blickenderfer of U of M Extension have both retired leaving this priority area without any staff. Several AIS training sessions were carried out by the Extension staff.

Control and Monitoring

An AIS crew of four lead by Chris Evans through SWCD did 96 lake surveys with 47 lakes having AIS and 49 surveys where no AIS were found. The purple loosestrife control program had a successful year with over 45,000 beetles collected and released to larger trouble locations. This crew also placed zebra mussel traps in 21 locations for the early detection and rapid response program.

Community Action Projects

A total of nine grants were awarded in 2015 with six of the grants being completed using \$13,793 in matching funds. There is still money available to fund several more grants if proposals are received.

Communications and Awareness

The AIS Watercraft Inspectors and the SWCD Field Crew participated in the Tall Timber Days parade and later had a booth at the County Fair. The AIS County Coordinator also gave AIS presentations to several service clubs and lake associations during the summer.

A special zebra mussel fieldwork project was formed with the Grand Rapids High School biology students to study mussel density on Sand Lake. The zebra mussels in the traps on Sand Lake are being counted during the winter to develop a system for estimating zebra mussel population.

Database and Website

The work on adding AIS information to the County website is progressing very slowly.

THE SKY WAS FULL OF MIDGE

By Harold Goetzman

Did you ever wonder where all those huge swarms of mosquito-like bugs come from every year near the end of August or early September? This year the sky was just black with bugs around dusk and if you were lucky enough to be on the water you might have noticed them almost boiling out of the lake. They started around September 1st and lasted for nearly a week while normally they are done in four days. This year the hatch seemed worse than normal. Those particular insects are called Chironomus Midge and are hatched from the invertebrate Chironomus larvae that live in the deeper parts of the lake in the bottom sediment. Other invertebrate are also present and throughout the summer you will find periods of high bug concentrations that swarm in the pine trees, particularly the

smaller, light-green ones (phantom midges). Other insects that emerge earlier in the summer are hatched from various benthic organisms such as Metriocnemus, Tubifex and Nematode.

How do I know this bug stuff? These discoveries were made when a number of bottom sediment (benthic) samples were taken about 25 years ago from Jessie Lake with an Ekman Dredge as part of a Science Fair project by Eric Goetzman to see what was in that benthic mud. The samples were screened to separate the invertebrate or benthic organisms from the sediment and they were then identified and counted. The studies showed that the most prominent invertebrates were the midge larvae, Chironomus, and its close relative Metriocnemus. The Chironomus larvae are an impressive dark red and about 3/4 inch by 1/8 inch in diameter (sometimes called blood worms). They don't affect water quality and the fish feed on them as deep water invertebrate in the winter as well as the emerging midge in the fall. Usually the number of Chironomus collected was 55 to 100/ft² (about 1/2 million per acre) while the total invertebrate was more than 180/ft² (1620/sq yd) for the 6 to 8 types found.

Shallower areas of the lake bottom contain different types of organisms like the Mayfly larvae that hatch early in June, but these studies concentrated at looking in the sediment from the deepest water. Ultimately, the health of the benthos community tells us something about the nature of the lake. It may mean that big numbers of big bugs makes for big fish.

It is interesting that several people on Little Jessie Lake told me they did not observe a large hatch of midge this year. However, in the 1987 study the population of Chironomus larvae was 50% larger than for Jessie Lake at that same time. Since the hatch seems dependant on water temperature it could have been delayed or spread out over a longer time on Little Jessie.

POTPOURRI

By Harold Goetzman

Share the Lake Day. This was the ninth year that our Association has hosted a day of sharing with those not able to live on a lake. Thanks to Carol Wood we had a great place to host 34 guests from the Bigfork Nursing Home. Carol, Marn Flicker and Jim Deconcini did a great job of getting things organized and we had a good turnout of JLWA volunteers to help out that day. This year we again had rides on the handicapped accessible pontoon boat provided by the Let's Go Fishing organization, which was the highlight of the day with beautiful calm weather. The guests and our members also enjoyed music by Rob Larsen and a traditional picnic together with hot dogs, beans, chips and cookies. Sitting on the shore enjoying the sunshine, socializing and some pretty good stories make it an interesting day. This year we also had a \$175 grant from the NIEC Round-up program for half the cost.

Lake Weed Removal. At the fall meeting there was some discussion about Jessie lake having more weeds than in past years. This does happen in years when the water clarity is better and water temperature is cooler in early summer. One of the problems was that people found large rafts of weeds washing into shore this fall. These loose weeds have been either cut by property owners or uprooted by high winds. Please do not cut weeds and leave them in the water as that is a violation of the law.

Aquatic plants serve many important functions in lakes. They prevent shoreline erosion, stabilize bottom sediments, provide habitat for fish and wildlife and tie up nutrients that might otherwise grow algae. We encourage shoreline property owners to keep the disturbance of near shore vegetation as small as possible as removing too many aquatic plants can impair their ability to perform these important functions. Lakeshore property owners can control a modest area of aquatic plants for swimming or boat docking without a permit from the DNR. Cutting, pulling, raking, or harvesting submersed vegetation like pondweeds, watermilfoil or coontail in an area for recreation is allowed under the following conditions:

- The cleared area may not exceed 2,500 square feet in size.
- The cleared area may not extend more than 50 feet along the shore or more than one-half the frontage width-whichever is less.

- If the cleared area does not reach open water, a 15-foot wide channel to open water may be added.
- The cut or pulled vegetation must be removed from the water.

If floating leaf vegetation, like white or yellow water-lilies interfere with boat access, a lake shore property owner can mechanically maintain (cutting or pulling) a channel no more than 15 feet wide, extending to open water without a permit, under the following conditions: the channel must remain in the same place from year to year and the vegetation that is cut must be removed from the water.

Roadside Clean-up. On Friday, October 10th we had 12 members meet to pick up litter on 3 miles



of County Rd 35 between Highway 6 and County Rd 133. Shown in the picture below are Harold Goetzman, Gin and Dave Anderson, Betty Steinbrenner, Rhonda Nichols, Jason Jorgenson, Gary Lees, Don Ojanen, Harley Steinbrenner, Krista Hagen and Rita Anderson. Krista Hagen organized the project and she even included a nice day, which was scheduled on a Friday to improve participation. This was followed by lunch at Jim and Rita Anderson's (thanks much Jim and Rita). The County provides garbage bags and vests so it is a good public service event for JLWA. We will also need to pick up litter in the spring. Think about helping

next year, which will be year eleven for this program.

Wood Duck Houses. At the fall annual meeting there were 10 wood duck houses given out to members (Harold in picture) with priority to new members. These houses were made by Jim Anderson who volunteered his labor and JLWA paid for the materials. Jim also made 18 houses in 2005, which were handed out to anyone willing to put it up. This makes the fourth time we have distributed duck houses as this program was started very early in our history when we acquired 25 wood duck houses from Ducks Unlimited in the spring of 1999. That fall we obtained 15 more houses that members agreed to install on their land or on public land. This project has been successful as after the first year we had reports of about 50% occupancy with over 30 goldeneye chicks and 10 wood ducks actually counted. If you have installed one of the 68 duck houses be sure to check and clean them every spring to be sure squirrels have not taken over. One fall I removed a bucket full of pine cones, which were being stored for the winter. I now put a temporary cover over the hole in the fall until spring when the ducks return.



JLWA Website. The website is updated regularly by our webmaster, Hollister Madsen and he has requested that we make our members aware that they should feel free to contact him with any additions or changes they would like to see. Please call him at 832-3551 if you have a suggestion for improving the website as we would like our members to use the site as a resource to get information.

Quotable. "In every walk with nature one receives far more than he seeks"—John Muir

DID YOU KNOW?

By Harold Goetzman

- Many factors affect when a bird migrates, however, did you know that ducks and geese may fly as high as 10,500 feet while migrating? That is almost two miles above ground.
- Loons can travel at speeds of nearly 70 mph when migrating.
- Roughly 200 species of birds that nest in MN will head south each fall. Keep feeders full in the fall.
- The most sought-after fish, in order of preference are crappie, panfish, walleye and northern pike.
- About 85% of the walleyes caught by MN anglers are from natural reproduction. The DNR stocks about 1050 lakes that can't maintain a walleye population through natural reproduction.
- Jessie Lake froze over on Nov. 29th, which is 6 days over the long-term average of Nov. 23rd.
- Our website (www.minnesotawaters.org/jessielakewatershed) is updated regularly by our Webmaster Hollister Madsen with meeting notices and the latest issue of the Jabber.

CONTRIBUTIONS

Our sincere thanks to the following households that made financial contributions in 2015 to the JLWA: David and Virginia Anderson, Ron and Lynn Beranek, David Bernardson, Orrin and Ruth Bumgardner, Loren and Teresa Chicoine, Bill and Melissa Coleman, Fred and Cleo Conrad, Brad Dick, Todd and Kari Drake, Doug Dusbabek, Robert and Sandra Ebert, Marn and Marie Flicker, Harold and Diane Goetzman, David Goodall and Anne Lind, Tom and Nancy Hackler, Jerome Hoepfner, Randy and Kristine Imker, Craig and Linda Johnson, Shirley Johnson, Jason and Tina Jorgenson, Greg and Ruth Kirkevold, Abe and Bonnie Korf, David Kuhn, Phillip and Kathleen LaRoche, Gerald and Shelly Loney, Hollister and Jerril Madsen, Don and Marcie Majerle, Rhonda Nichols, Lowell and Lynn Nystrom, Mike and Janet Nystrom, Jerry Ostergren Sr., Bruce and Lorraine Paatela, Mike and Theresa Peterson, Richard and Debra Regnier, Clint and Lesli Sand, Larry Schedin, Stephen and Barb Schmit, Mike and Peg Selander, Duane Thorson, Bill and Christine Threinen, Richard and Kathleen Thurston, Wayne Tollagson, Maureen Wilkus-Kieren, James and Jennifer Wilson and Denise Zaske. Thanks, also to the many unnamed volunteers who have spent many hours during the year, which are priceless.

MEMBERSHIP

The JLWA presently has 116 paid members. Treasurer, Tina Jorgenson will send out an invoice for dues in early January.

CLIP AND SAVE FOR FUTURE REFERENCE

Our JLWA website is ---www.minnesotawaters.org/jessielakewatershed

JLWA OFFICERS

	<u>PHONE</u>	<u>EMAIL ADDRESS</u>
President – David Anderson	832 3351	theandersons7@comcast.net
Vice President – Hollister Madsen	832 3551	hollistermadsen@gmail.com
Treasurer – Tina Jorgenson	327 7204	tjorgenson@isd318.org
Secretary – Rhonda Nichols	218 259 9220	rinnieboo69@gmail.com

BOARD OF DIRECTORS

Dick Schedin	832 2171	owensgrampa@yahoo.com
Jake Carstensen	832 3693	relax@loonslanding.net
Harold Goetzman	832 3139	hgoetzman@yahoo.com
Jason Jorgenson	327 7204	jergymn@yahoo.com
Don Ojanen	832 3716	DPOjanen@arvig.net

JABBER EDITOR

Harold Goetzman	326 3908	hgoetzman@yahoo.com
-----------------	----------	---------------------

WEBMASTER

Hollister Madsen	832 3551	hollistermadsen@gmail.com
------------------	----------	---------------------------

