





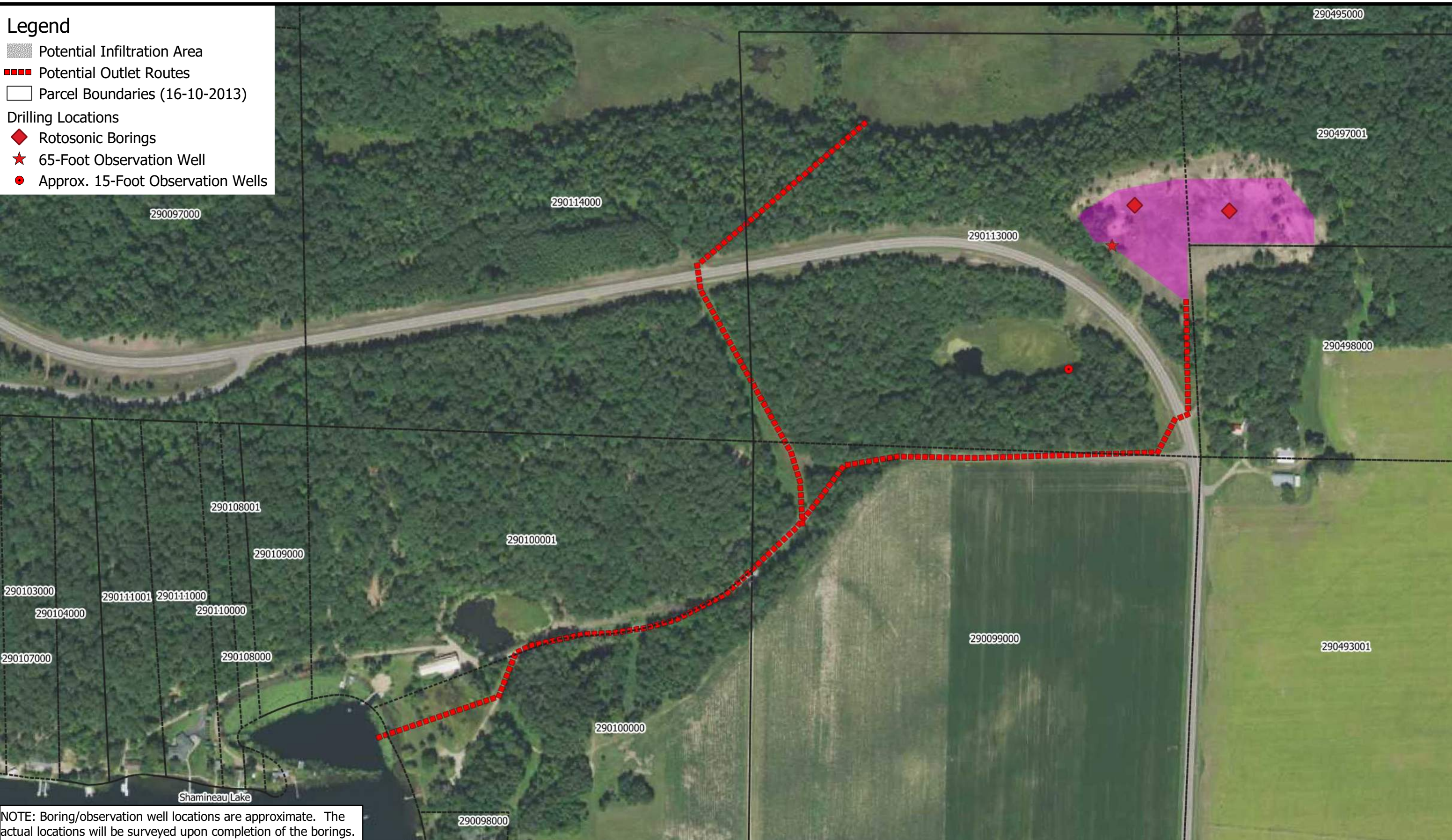


PROJECT SCHEDULE AND DELIVERABLES				4/22/19	5/31/19	8/1/19					
LAKE SHAMINEAU HIGH-WATER PROJECT - STEP 1 MORRISON COUNTY, MN				Project Start	Step 1 End	Step 2 End			Step 3 End		
Deliverables	Start	End		May-19	Jun-19	Jul-19	Aug-19	Sep-19	Oct-19	Nov-19	Dec-19
1.0 Kickoff and Project Management											
Kickoff Meeting with LID Minutes	05/10/19	05/14/19	◆								
Project Plan & Schedule	04/22/19	05/31/19									
Meeting Minutes with County, SWCD, and DNR	05/30/19	05/30/19									
Phone/Email Status Updates with LID (Bi-monthly)	05/02/19	03/01/20									
2.0 Route Alternative Analysis											
Property Owner Discussion Memo	04/30/19	05/22/19	◆								
North-Northeast Outlet Corridors Memo	05/10/19	05/24/19									
Hydrogeologic Investigation Report	05/10/19	05/24/19	◆								
Draft Route Engineering Report	05/06/19	05/28/19									
Preliminary Cost Estimates & Updated Schedule	05/28/19	05/31/19									
Present Draft Report to LID	05/28/19	05/28/19			◆						
Engineering Report	05/06/19	05/31/19									
Legend											
◆	In Person Meeting & Minutes (within 2 days)			☒	Utility Meeting & Minutes (within 2 days)						

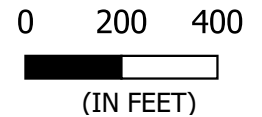
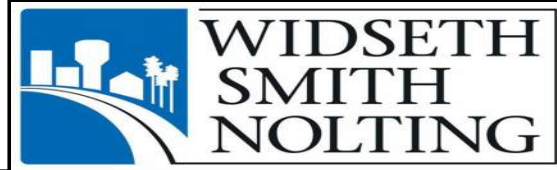
Legend

-  Potential Infiltration Area
-  Potential Outlet Routes
-  Parcel Boundaries (16-10-2013)
- Drilling Locations**
-  Rotosonic Borings
-  65-Foot Observation Well
-  Approx. 15-Foot Observation Wells



NOTE: Boring/observation well locations are approximate. The actual locations will be surveyed upon completion of the borings.

Image: FSA AERIAL (2017)



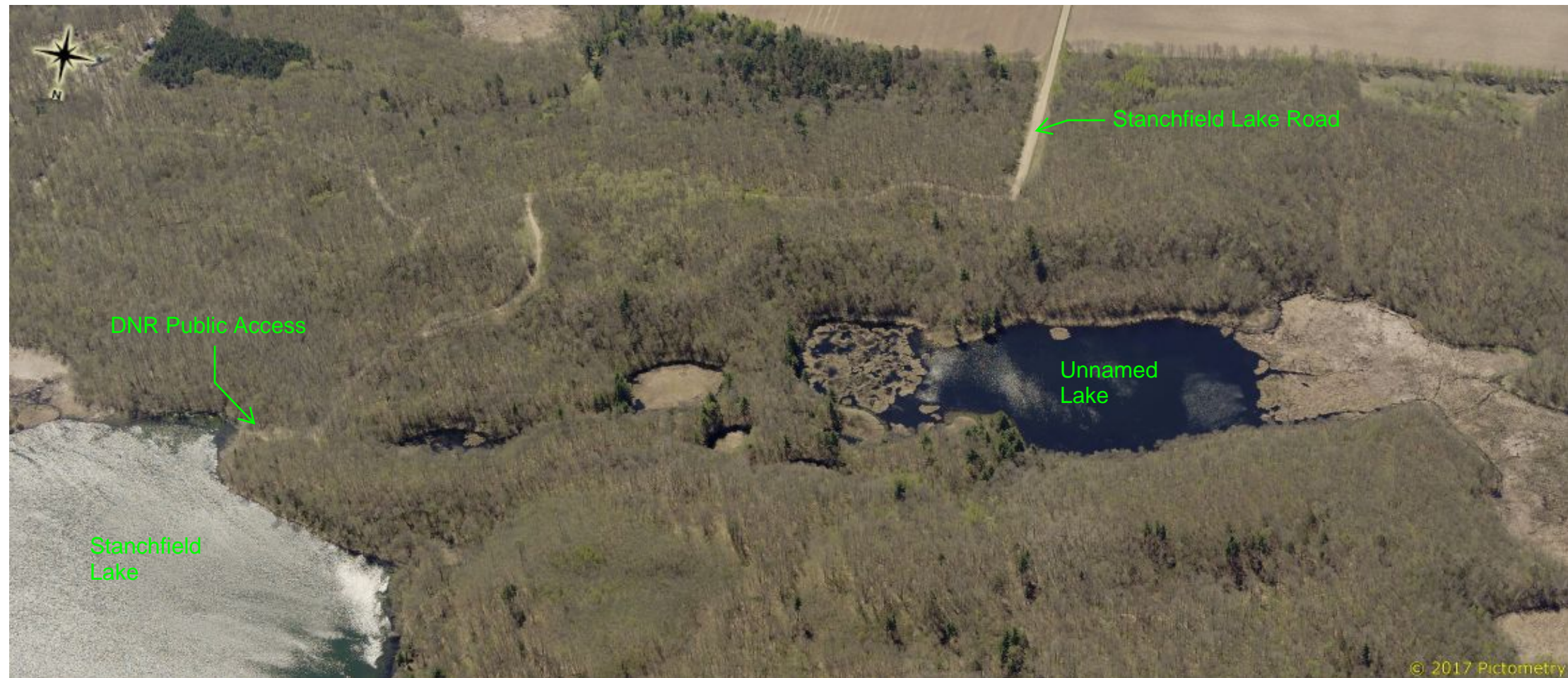
LAKE SHAMINEAU HIGH WATER PROJECT - STEP 1
LAKE SHAMINEAU LAKE IMPROVEMENT DISTRICT
MOTLEY, MN

POTENTIAL OUTLET ROUTE MAP

Date: MAY 2019	
JOB No. 0260B1434.000	FIGURE A

J:\0260B-Brainerd Environmental\0260B1434-Lake Shamineau High Water Proj. Step 1\0260B1434.001-Lake Shamineau High Water Proj. Step\GIS\Models\W-TP-0250B1434.000.gqz

MN DNR Land



GEOLOGIC LOGS
LAKE SHAMINEAU HIGH WATER PROJECT – STEP 1
GRAVEL PIT BORINGS

<u>Observation Well</u>	<u>From</u>	<u>To</u>
Coarse to Very Coarse Sand, Brown	0	25
Fine to Medium Coarse Sand, Gray-Brown	25	27
Medium Coarse to Coarse Sand, Brown	27	42
Loess, Light-Gray	42	44
Medium Coarse to Coarse Sand, Brown	44	65
<u>Boring 1</u>	<u>From</u>	<u>To</u>
Coarse to Very Coarse Sand, Brown	0	18
Loamy Fine-Medium Coarse Sand, Brown	18	19
Coarse Sand, Brown	19	25
Silty Clay, Gray	25	26
Coarse Sand, Brown	26	62
Coarse Sand, Gray-Brown	62	73
Very Coarse Sand, Gray-Brown	73	80
<u>Boring 2</u>	<u>From</u>	<u>To</u>
Coarse to Very Coarse Sand, Brown	0	3
Loamy Fine-Medium Coarse Sand, Brown	3	4
Coarse Sand, Brown	4	16
Medium Coarse to Coarse Sand, Brown	16	22
Loamy Fine-Medium Coarse Sand, Brown	22	24
Medium Coarse to Coarse Sand, Brown	24	55
Loess, Light-Gray	55	57
Coarse Sand, Gray-Brown	57	71
Very Coarse Sand, Gray-Brown	71	75