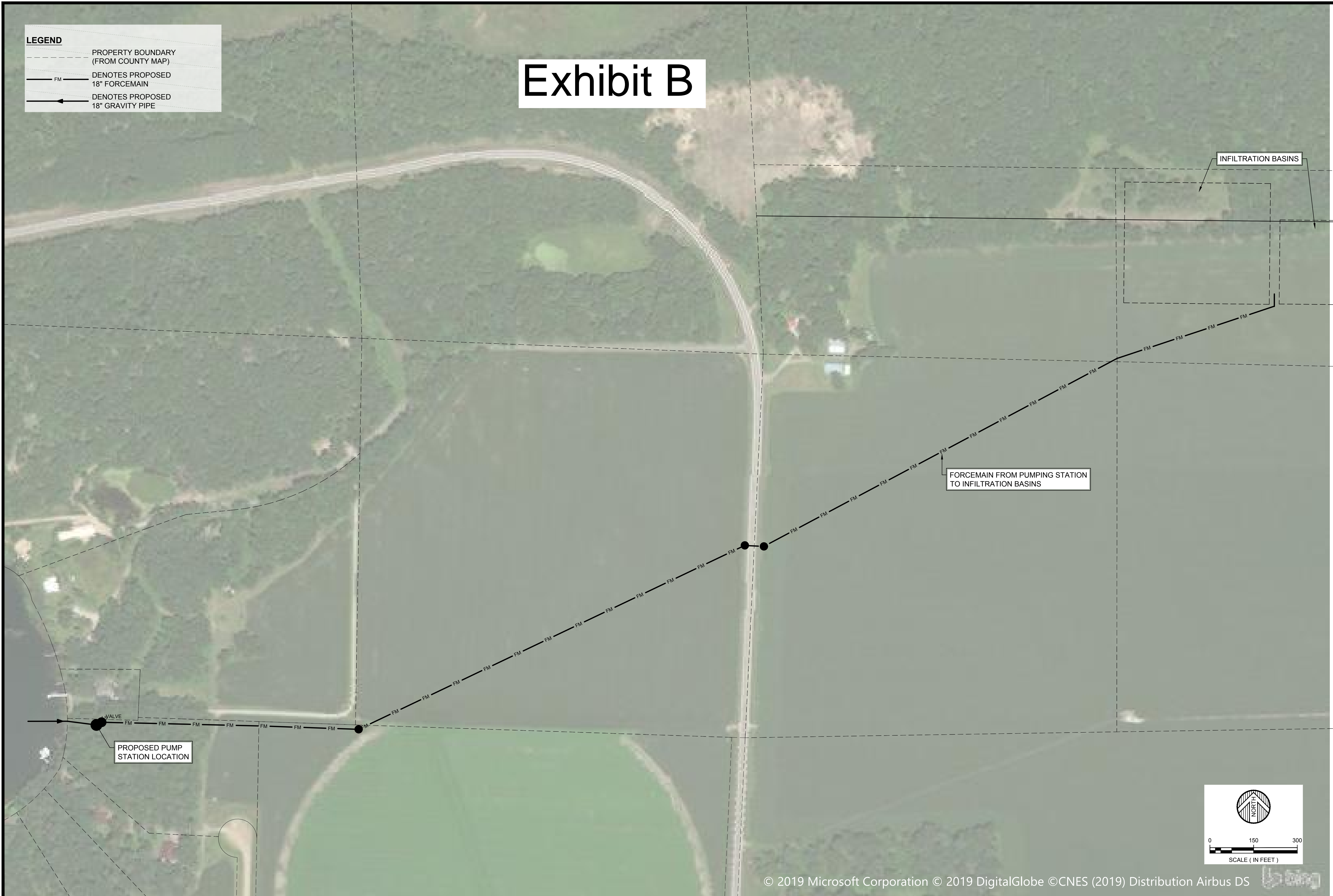


Exhibit B

LEGEND	
	PROPERTY BOUNDARY (FROM COUNTY MAP)
	DENOTES PROPOSED 18" FORCEMAIN
	DENOTES PROPOSED 18" GRAVITY PIPE



THESE SERVICES HAVE BEEN PREPARED BY ME OR UNDER MY DIRECT SUPERVISION AND THAT I AM A DAILY LICENSED PROFESSIONAL ENGINEER UNDER THE LAWS OF THE STATE OF MINNESOTA.
 DATE: MMDDYYYYYY NO.

DATE	REVISION DESCRIPTION	BY

DATE: NOVEMBER 2019
 SCALE: AS SHOWN
 DRAWN BY: JWR
 CHECKED BY: BAR
 JOB NUMBER: 2019-13229

LAKE SHAMINEAU HIGH WATER PROJECT
 LAKE SHAMINEAU LAKE IMPROVEMENT DISTRICT
 MOTLEY, MN
PROPOSED UTILITY ROUTE MAP